

A DECKIE'S LAMENT

© PRS - D Evardson

Tune Trad (Claudy Banks)

♩=120



It was on one pleas- ant eve- ning, all in the month of



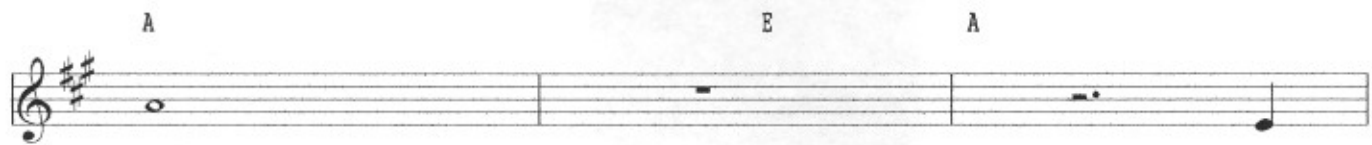
June, wi' me kit- bag on me shoul- der, I strolled off the pon-



toon. Wi' the Far- oe Isles be- hind me, I did- n't have a



care as I made me way to the tax- i rank, yon side of Ri- by



Square.

A