

THE FISH DOCK RACES

© PRS - D&J Evardson

♩=160

Capo 2nd Fret

C Am C Am C Am



VERSE: On Fri-day aft-er-noon's at half- past- one, the school-house gates all

G C Am C Am C Am



clo- ses. The lads and lass- es all troop out, droop-y drawers and run- ny

G C G C D7



nos- es. Hun-dreds of kids are rac- ing to the docks to get Dad's

G C Am C Am C Am



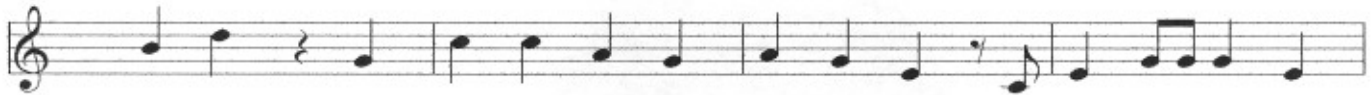
wag- es, and if you're late at the back o' the queue, you're stand- in' there for

G C C Am C



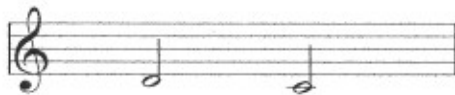
ag- es. CHORUS: The West Marsh kids are on the move, big par- ish boots make

G C Am C Am C Am



pac- es. They're all let off on spec- ial leave, to go to the Fish Dock

G C



Rac- es!